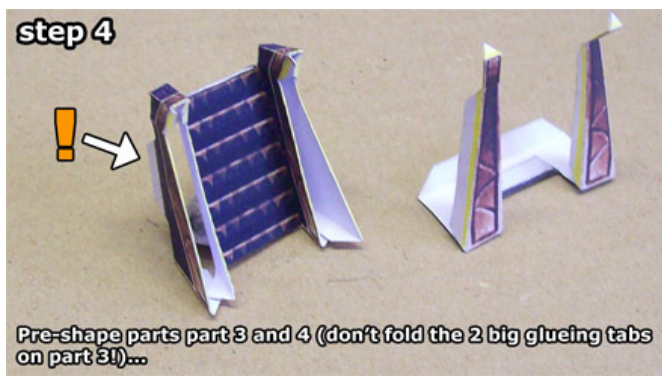


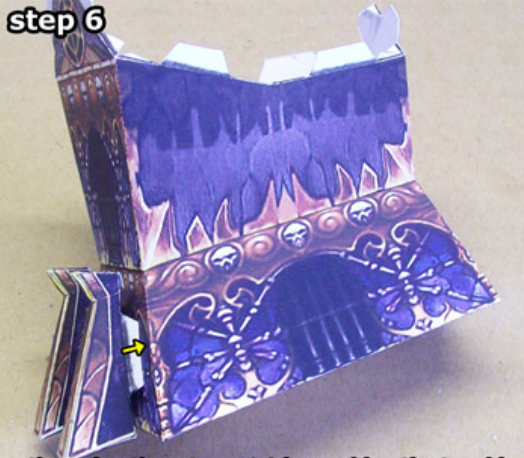
WARCRAFT III UNDEAD GRAVEYARD ASSEMBLY MANUAL



For best results, print the parts on thicker paper (I use 200 gsm myself). Other than that, you'll only need basic papercraft tools to build this model.

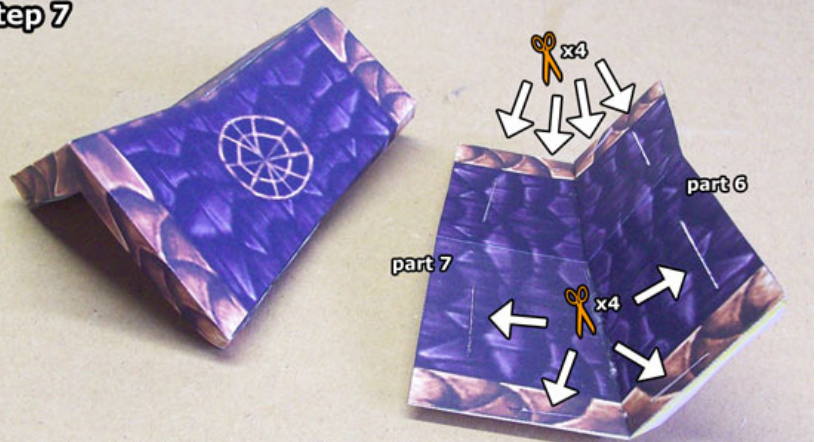


step 6



...then glue them to part 1 by pushing the two big glueing tabs that you didn't fold through the slits.

step 7



Assemble parts 5-7 (don't forget the small slits on parts 6 and 7) as shown here...

step 8



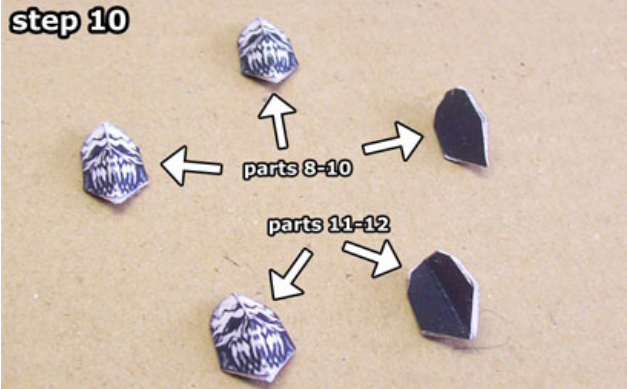
...then glue parts 6+7 underneath part 5.

step 9



Push the 8 glueing tabs you didn't fold on part 2, to glue the roof to the walls of the tomb.

step 10



Cut out and assemble the parts 8-12 as shown here; parts 8-10 have a flat backside, parts 11+12 a hollow one.

step 11



Now glue the skulls to the tomb (parts 8-10 to the roof, parts 11-12 on the corners next to the stairs).

step 12



Next, cut out and glue together parts 13 and 14 (to the bottom) to make the base of the model.

step 13



Before closing the bottom of part 15, first assemble part 16 (with the coloured side in)...

step 14



...so you can glue part 16 underneath the hole on part 15.

step 15



Part 17 folds into a coffin.

step 16



The four obelisks (parts 18-29) all go together pretty much the same way.

step 17



You can glue all the parts to the base any way you like of course, so use your imagination! ;o)